



*flex Focus 400*  
Mobile Ultrasound Has Grown Up



reddot design award  
winner 2010



*Sharp images on a  
19" high-resolution monitor.*



*Transducer connectors  
right where you need them.*



*With its small footprint,  
the Flex Focus fits anywhere.*



*Superior cable management - cables are out of sight  
and out of the way.*

# Mobile Ultrasound Has Grown Up

**Times have changed,  
and so has mobile ultrasound**

## **Premium Images**

Premium clinical performance – premium images. The Flex Focus 400 is a full-featured system that gives you superb clear images on a 19" high-resolution monitor. It moves easily to the point-of care and is small enough in size to physically fit into any clinical setting, even smaller, private practice offices.

## **Sharp Images**

High-resolution images with IQPAC™ technology, for speckle reduction and better border definition. The image quality on the Flex Focus 400 gives you simultaneous biplane like you've never seen before.

## **Cordless Images**

With the BK Power Pack you get four hours of continuous operation and three hours of uninterrupted scanning time, including both scanning and freezing during each patient exam.

## **Easy Images**

The customizable user interface makes the Flex Focus 400 easy to use, right from the start. It lets you focus what's important – the patient.

**With the Flex Focus 400, there is no need to compromise.**



*BK Power Pack  
The unique continuous power display shows you the residual time left to scan, even when the system is turned off.*



*A small system with big possibilities, like three transducer connectors.*

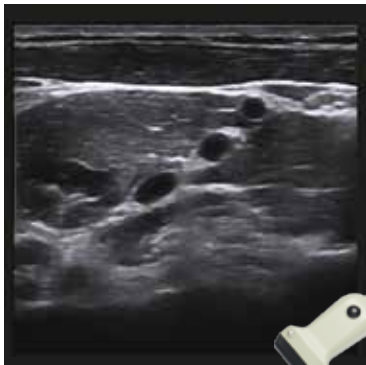


*On-screen controls arranged on tabs that open as you move through the examination, so just the controls you need are visible.*

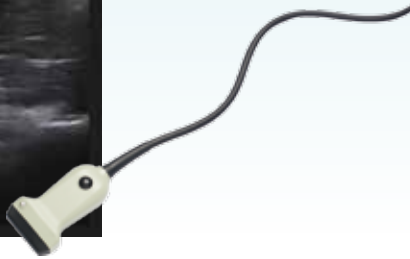


*Smooth, sealed surfaces for easy cleaning and reduced risk of patient cross-contamination.*

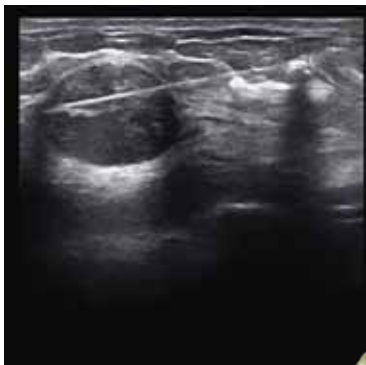
## Anesthesia



*Clear high-resolution images on a completely mobile system. Superb detail in the near field.*



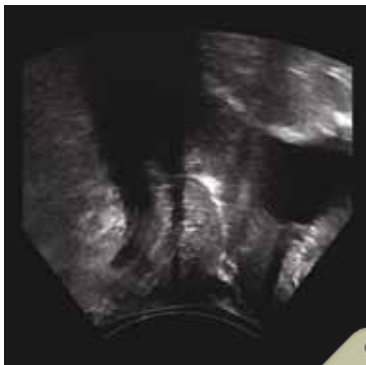
## Breast Imaging



*It's easy to follow the needle on the clear, sharp image. 3-angle needle guides let you choose the angle.*



## Women's Health



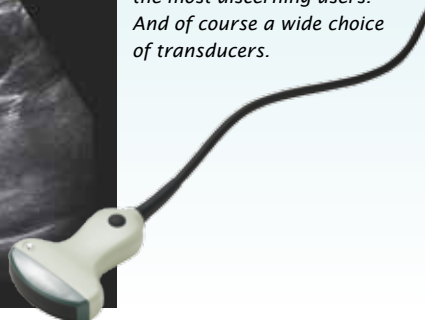
*Transducers that cover the range of women's health applications, including pelvic floor, gynecology, obstetrics and breast.*



## General Imaging



*Images that satisfy even the most discerning users. And of course a wide choice of transducers.*



# We **Spe** Because

BK Medical has always led the way with groundbreaking transducers specialized to suit the needs of specialists. You could call us the specialists' company.

We were the first to introduce simultaneous biplane imaging and high-resolution 3D imaging. We made the first triplane transducer. We put buttons on our transducers so you can control the scanning with your hand on the transducer and your eye on the image. And all our transducers have carefully thought-out puncture guides to help with needle guidance.

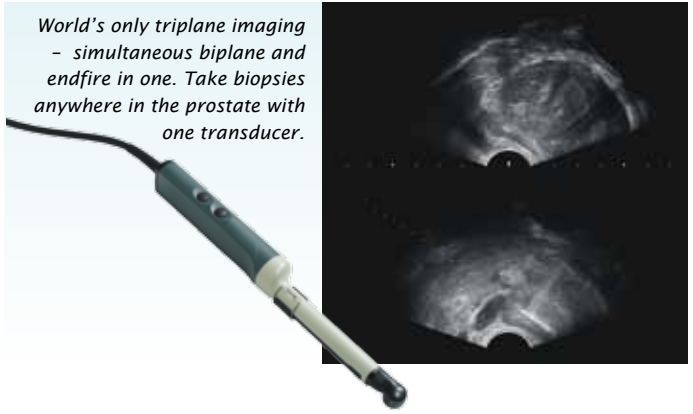
And now we give you an innovatively designed mobile system with a clear, sharp image on a high-resolution 19" monitor and a user interface that follows your workflow. Just the controls you need at each stage of the examination.

Take exactly the transducers and accessories you need, add all the features of the Flex Focus, and you have a specialized ultrasound system - whatever your specialty.

# cialize You Do

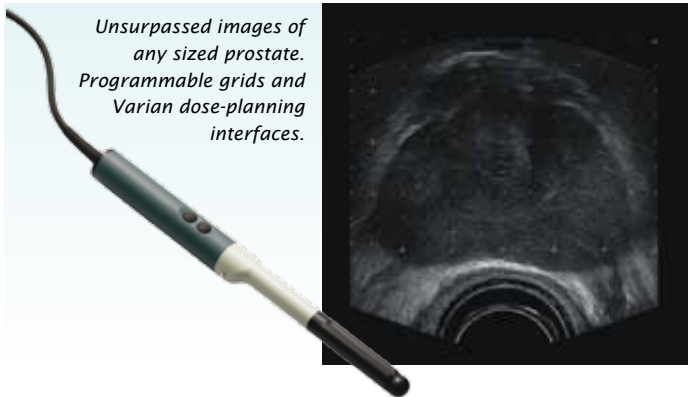
## Prostate Imaging

World's only triplane imaging  
- simultaneous biplane and  
endfire in one. Take biopsies  
anywhere in the prostate with  
one transducer.



## Prostate Brachytherapy and Cryotherapy

Unsurpassed images of  
any sized prostate.  
Programmable grids and  
Varian dose-planning  
interfaces.



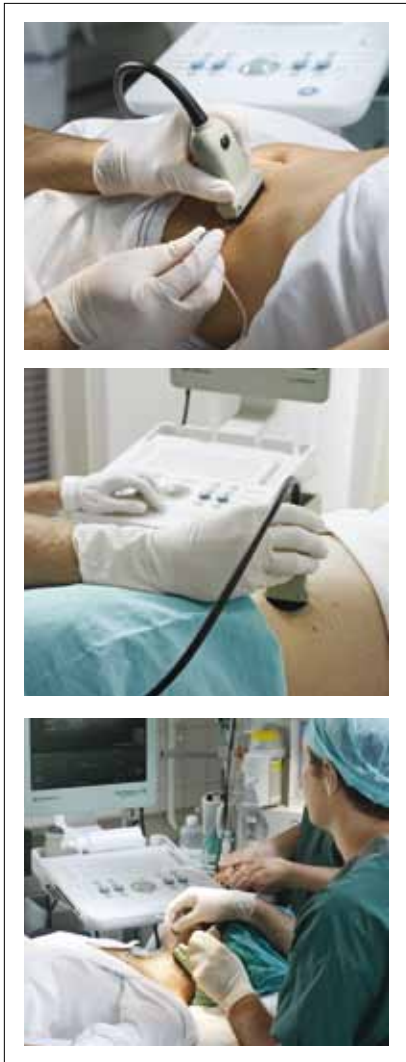
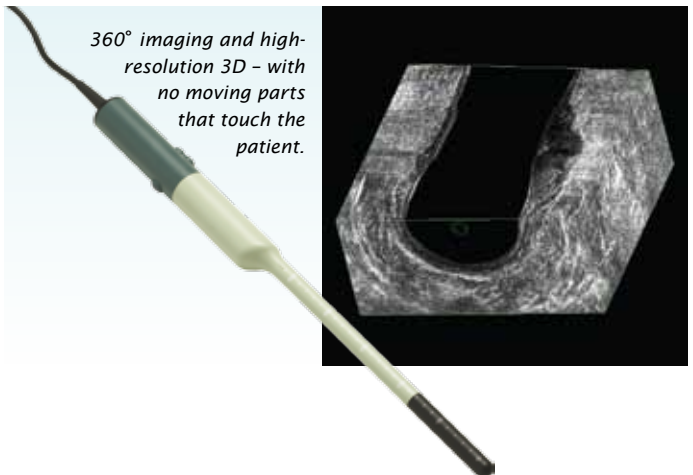
## Musculoskeletal Imaging

Superb detail in the near  
field together with excellent  
penetration.



## Colorectal

360° imaging and high-  
resolution 3D - with  
no moving parts  
that touch the  
patient.





*Flex Focus is everywhere you are,  
from the top of your desk...*



*to the wall...*

*to wherever you need your  
system to be. Flex Focus  
moves easily ...*



*so you can take your  
practice with you to any  
location.*

# No Compromise

With the Flex Focus, you get “ultrasound on the move” complete with full-sized system features.

You don't need to compromise on

- Image clarity and resolution
- Mobility
- Choice of transducers
- Convenience

You can have it all.



*Flex Focus is mobile ultrasound.  
So your practice is right where  
you are.*



*Elegantly designed. The imaging unit is housed within a high-resolution, 19" monitor.*



*Easy to move, so you can take it anywhere.*
















*A full range of specialized transducers and needle guides.*



*Everything you need - for example, the BK Power Pack and printer - is right where you need it. On the system.*

# Transducers supported by Flex Focus 400

<b>2050/2052</b> Mechanical	<b>8667</b> Convex array	<b>8808</b> 2 Convex arrays	<b>8808e</b> 2 Convex arrays	<b>8848</b> Convex/Linear	<b>8818</b> 3 Convex arrays	<b>8819</b> Convex array
						
Transrectal Transvaginal	Transrectal Puncture	Transrectal Puncture	Transrectal Puncture	Transrectal Transvaginal Puncture	Transrectal Transvaginal Puncture	Transrectal Transvaginal Fetal Puncture
6-16 MHz	5-10 MHz	5-10 MHz	5-10 MHz	5-12 MHz	5-12 MHz	5-9 MHz

<b>8838*</b> Linear array	<b>8802</b> Convex array	<b>8670</b> Linear array	<b>8820e</b> Convex array	<b>8823</b> Convex array	<b>8827</b> Phased array	<b>8830/8820e</b> Convex array
						
Transrectal Transvaginal	Abdominal Obstetrics Pediatrics Fetal Puncture	Musculoskeletal Small part Pediatrics Peripheral vascular Puncture	Abdominal Obstetrics Fetal Puncture	Abdominal Puncture	Cardiac	Obstetrics Pediatrics Fetal Abdominal Puncture
4-12 MHz	3-6 MHz	5-12 MHz	2-6 MHz	2-6 MHz	2-4 MHz	2-6 MHz

<b>8870</b> Linear array	<b>1850</b> Mechanical	<b>8809</b> Linear array	<b>8816**</b> Convex array	<b>8662</b> Convex array	<b>8811</b> Linear array	<b>8822</b> Linear array
						
Musculoskeletal Small part Peripheral vascular Puncture	Transrectal Intraoperative Puncture	Musculoskeletal Intraoperative Peripheral vascular Small part Puncture	Intraoperative Abdominal	Neurosurgical Pediatrics Puncture	Musculoskeletal Peripheral vascular Small part Puncture	Peripheral vascular Small part Puncture
6-18 MHz	5-10 MHz	6-15 MHz	5-10 MHz	5-10 MHz	5-12 MHz	3-5 MHz

\* For future release.

\*\* For Flex Focus 400 Anesthesia only.

## Headquarters: USA

B-K Medical Systems, Inc.  
8 Centennial Drive • Peabody, MA 01960  
Tel: +1 800 876-7226 / +1 978 326-1300  
Fax: +1 978 326-1399  
www.bkmed.com

## Headquarters: Europe and Rest of World

BK Medical  
Mileparken 34 • DK-2730 Herlev  
Denmark  
Tel: +45 4452 8100 • Fax: +45 4452 8199  
www.bkmed.com



*A wholly owned subsidiary of Analogic Corporation*

B-K Medical Benelux NV  
Generaal de Wittelaan 19/7, 2800 Mechelen,  
Belgium  
Tel: +32 1528 0600,  
Fax: +32 1529 1025

B-K Medica S.r.l.  
Via Tulipani 1, 20090 Pieve Emanuele MI,  
Italy  
Tel: +39 02 90 78 13 47  
Fax: +39 02 90 78 19 05

B-K Medical AB  
Mänskärsvägen 9, 141 75 KUNGENS KURVA,  
Sweden  
Tel: +46 8-744 02 11  
Fax: +46 8-744 02 12

B-K Medical Medizinische Systeme GmbH  
Pascalkehe 13, 25451 Quickborn,  
Germany  
Tel: +49 4106 99 55-0  
Fax: +49 4106 99 55-99

B-K Medical Norge  
Nesbru Senter, Fekjan 7B, 1394 Nesbru,  
Norway  
Tel: +47 66 77 45 77  
Fax: +47 66 77 45 78

B-K Medical (UK)  
11 Grove Park, Waltham Road, White Waltham,  
Berkshire SL6 3LW, United Kingdom  
Tel: +44 1628 825-770  
Fax: +44 1628 826-970